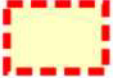










Location plan

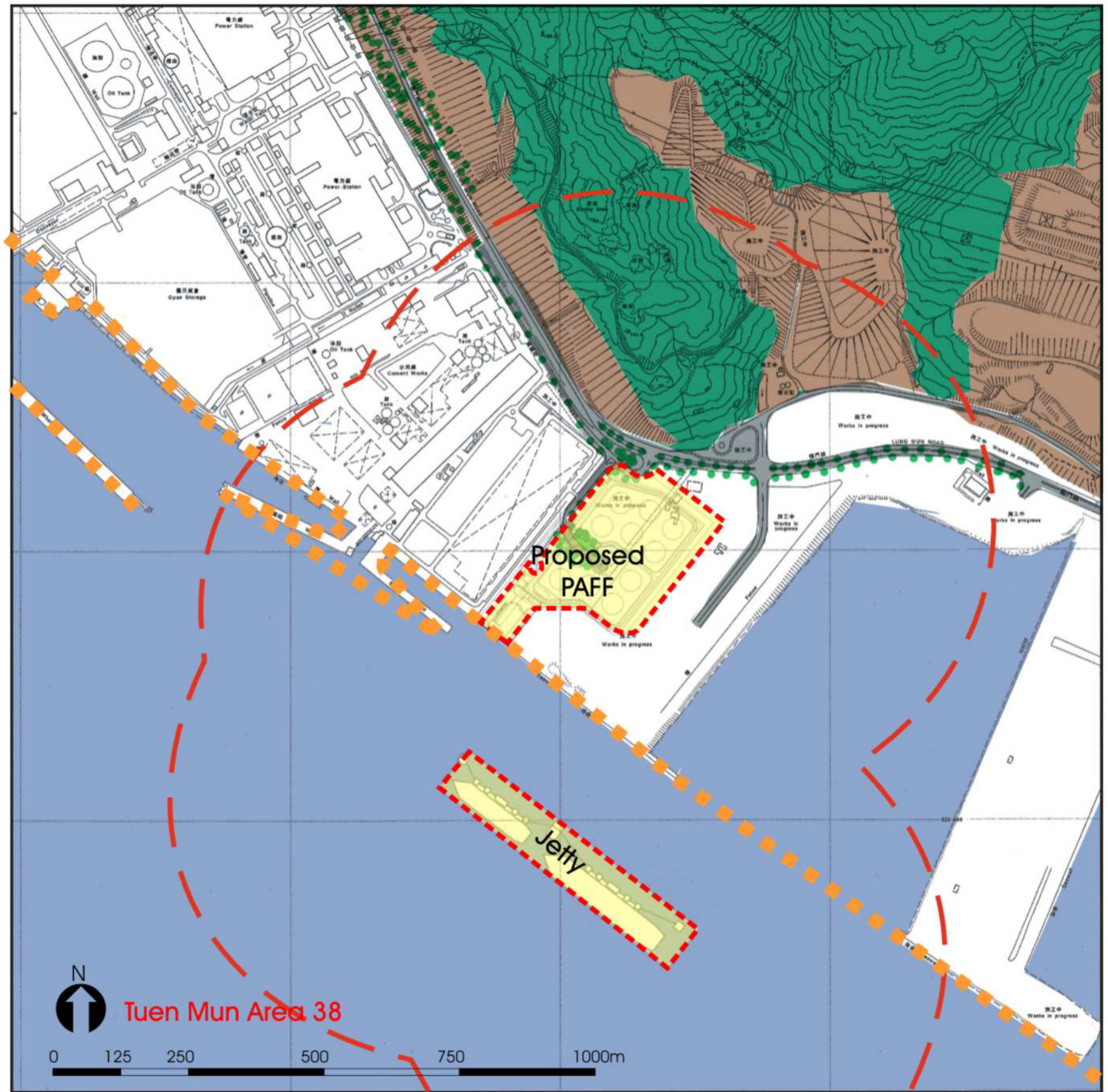


LEGEND:

-  Extent of the PAFF
-  LIA Study Area 500m
-  Secondary Woodland
-  Cut Slope
-  Sea
-  Manmade Coastline
-  Existing Roadside Whips
-  Vehicular Corridor
-  Industrial built-up elements

Refer to Table 8.5b in LVIA

	Description	Area conflict with the PAFF
Secondary Woodland	Existing secondary woodland associated with rocky area on the Castle Peak, north to the Proposed PAFF.	Nil
Existing Road side whips	Common plantation along roads.	212 nos. of roadside whips.
Cut Slope	Existing cut & fill slope along Lung Mun Road and near the container storage areas.	Nil
Sea		approx. 1.5ha. sea area
Vehicular Corridor	Existing linear structures for vehicles, Lung Mun Road.	375m long existing access road.
Industrial Built-up area	Reclaimed land at Tuen Mun Area 38 along Castle Peak Bay. Built elements are power plant, cement works, steel mill.	approx. 6.75ha. reclaimed land.
Manmade Coastline	Existing manmade seawall along Tuen Mun Area 38.	60m long



Landscape Elements

Mouchel

Figure No.

8.3c